

We are
MADISON COUNTY
INDIANA



"We Are Madison County" is a celebration of meaningful, impactful groups and individuals who make up Madison County's unique and cherished culture.

We celebrate community partnerships.

We are human-focused.

We unite, not divide.

We promote, not advertise.

We advocate, not politicize.



Scan the code to sign up for our email list!

Compiled, and edited by: Brenna Sealy



RECOGNIZING EXCELLENCE

Article by: Mark Thacker, Executive Director

2025 was another strong year for tourism within Madison County. Communities added to their quality of place initiatives, while we promoted thousands of events and tracked hundreds of events. It truly takes a village. Assisting to make 2025 another successful year, we want to recognize our annual award recipients. Congratulations to this year's recipients.

Amy McCurry

Mark P. Lamey Outstanding Volunteer

Amy McCurry is a leader within our communities. As the owner of the McCurry'Osity Shop in Alexandria, she is also an advocate for our small, boutique shops and 'shop local' programs. Amy can be found regularly volunteering around the county and supporting quality of place events and initiatives.



Terry Taylor

Mark P. Lamey Outstanding Volunteer

Awarded posthumously, Terry Taylor, served as the Board Chair for the Visitors Bureau, owned and operated the Madison County Soap Box Derby, and was a past President for the Indiana Black Expo - Anderson Chapter. Terry was passionate about Madison County, our cultural diversity, and the youth within our county.



Frankton Heritage Days

Presidents Award

2025 was Frankton's 50th annual Heritage Days. Celebrating a 50th of anything is a milestone. Frankton Heritage Days has grown and evolved over the years into such a vibrant celebration that annually brings more people together and highlights the pride and traditions of the community.



Anderson
Madison County
Visitors Bureau

INTRODUCING MARISSA SKAGGS AS PRESIDENT & CEO OF THE MADISON COUNTY ALLIANCE

On behalf of the Board of Directors, I am pleased to share that the Madison County Alliance has selected Marissa Skaggs as our next President and Chief Executive Officer. Marissa will begin her role on April 13, 2026.

Over the past several months, the board and search committee conducted a thoughtful and thorough process to identify the right leader for the Alliance. The committee reviewed approximately 25 applications and met with several highly qualified candidates before selecting Marissa as the person best positioned to lead the organization into its next chapter.

Marissa is a lifelong Madison County resident and currently serves on the Pendleton Town Council, where she has been President of the Council since 2023. She brings extensive experience in public service, nonprofit leadership and community partnership building.

Throughout the search process, it was important to the committee to identify a leader who understands Madison County and is deeply invested in its future. Marissa's background in local government, business, and nonprofit leadership brings a perspective that will serve the Alliance and our members well.

I would also like to thank Patty Lovins and Rachael McCracken for their leadership and dedication during this transition. Their continued work on behalf of our members has helped ensure the Alliance remains strong and focused on serving the business community.

Please join me in welcoming Marissa Skaggs to the Madison County Alliance. Thank you for your continued support and engagement.



Pictured: Marissa Skaggs

*Article by: Kim Townsend,
Madison County Alliance Board Chair*



WOMEN IN PHILANTHROPY



Jennifer Eisinger
Intern

Philanthropy is at the heart of what we do at the Foundation, guided by one of our key mottos: “Everyone can be a philanthropist.” While this is true for all, women hold a special place in philanthropy, bringing a unique perspective that values collaboration and equality in philanthropic work. This spirit of collaboration is something that must be fostered not only in fundraising efforts, but also in the broader initiatives aimed at strengthening our community.

Much like bees working together within a hive, a community cannot function without the contributions of each individual. Together, bees build complex, thriving systems that benefit not only themselves but also the larger ecosystems they support. Philanthropy works in a similar way. Each positive change creates a ripple effect, spreading hope and helping to build a better tomorrow through our shared and collective efforts.

The Madison County Community Foundation highlights and preserves this unique style of philanthropy through Women in Philanthropy (WIP). Established in 2005, WIP provides grants to local nonprofits focused on improving the lives of women and children in Madison County. This year’s event on April 16 will award more than \$35,000 in grants. The Foundation is actively pushing to grow the endowment so that large grants can continue to be granted to the amazing initiatives aiming to improve the lives of women and children in Madison County.

Among this year’s grant finalists:

- BLOOM Madison County – Seedling Initiative
- Operation Love Ministries – Family Stability Initiative
- Aspire Indiana Health – Technology for Kids Initiative

Women who get involved in philanthropy do more than give – they connect, uplift, and inspire. Their leadership strengthens communities, amplifies voices that might otherwise go unheard, and creates lasting change that extends far beyond a single moment or contribution. When women come together with purpose, compassion, and vision, they don’t just support a better future, they help build it.

For more information on Women in Philanthropy and this year’s event, visit www.madisonccf.org/giving.



MADISON COUNTY
COMMUNITY FOUNDATION



PIXELATED FLOWERS

Spring has sprung, and like the daffodils emerging from the dirt, across Indiana a new wave of economic development is taking shape as data centers continue to emerge in communities both large and small. These facilities are becoming critical infrastructure for the modern economy as a result of the rapid growth of AI and cloud computing. Indiana is positioning itself as a key player in that growth.

As data centers continue to expand across Indiana, developers are placing a stronger emphasis on being good community partners while also advancing more sustainable technology. Today's facilities look very different from those built even a decade ago, with intentional efforts to reduce their footprint and integrate more seamlessly into the communities they serve.

A key shift has been in how companies engage locally. Many data center operators are taking a proactive approach by working closely with local stakeholders. These can include local governments, economic development organizations, local nonprofits and educators, as well as residents early in the planning process to ensure the communities' needs are being met as a result of the potential development. In several Indiana communities, developers have supported local initiatives, workforce training programs, and created educational partnerships, helping ensure that the benefits of these projects extend beyond the facility itself.

Technological advancements have also significantly improved efficiency, particularly when it comes to water usage. Older data centers often relied heavily on water-based cooling systems, but newer designs increasingly incorporate closed-loop systems or air-cooled technologies that dramatically reduce or even eliminate ongoing water consumption. This is especially important in communities where water resources are a concern, and it reflects a broader industry commitment to sustainability.

Land use has also become more well-organized. Modern data centers are being designed to maximize computing power within a smaller physical footprint. Multi-story facilities, higher-density server configurations, and improved layout design allow operators to do more with less space. For example, look at the size of everyday technology devices; as time goes on, everything gets smaller and more efficient. Additionally, many projects are strategically located on previously underutilized or industrial-zoned land.

Together, these changes demonstrate how the data center industry is evolving. By prioritizing community engagement, reducing excess consumption, and using land more resourcefully, today's data centers are better positioned to be responsible neighbors while still delivering the economic and technological benefits driving their growth across Indiana.



Monique Flores
Project Manager &
Community Relations



COLORFUL STRINGS OF COMMUNITY CONNECTION



Amber Estes
Office Manager

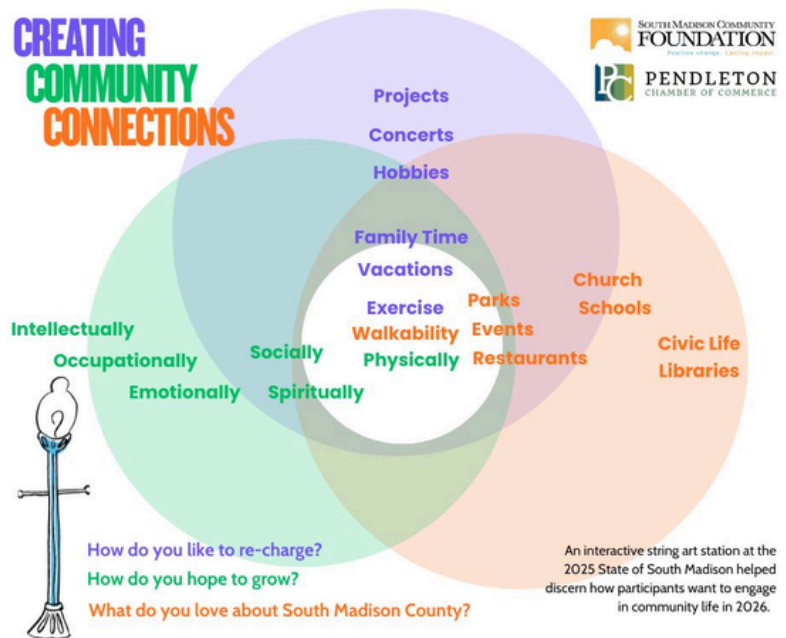
As a vendor at the lively Pendleton, Indiana Farmers' Market, I get a front-row seat to observe people from all walks of life as they spend their free time exploring and enjoying the community. If you could see a path tracing each person's route, you would see a tapestry of colorful lines with countless intersections.

The beeline shopper moves with laser focus, stopping only at the booths she knows and loves. The fishermen stay on the outskirts of the market but periodically dart in for a quick bite or refreshing drink. The cyclists ride straight through, usually with a pit stop mid-market to rest and refuel before continuing on. Many meet friends or family there since it's an easy, natural place to connect.

In my role as a vendor, I enjoy observing these connections. In my role at the South Madison County Community Foundation, my work helps draw new connections throughout South Madison County and

even across time by connecting donors to those currently receiving grant or scholarship support from funds set up long ago.

Our "Creating Community Connections" interactive art activity, co-hosted by the Pendleton Chamber of Commerce, used colorful strings to help us design environments ripe for connection. See the results of the string activity in the graphic and watch our programming to see how we engage our community in a way that speaks to the ways that make members feel healthier and happier.



**SOUTH MADISON COMMUNITY
FOUNDATION**

Positive change. Lasting impact.

